



Industrial Specialties Mfg.

An ISO 9001:2008 Certified Company

4091 S. Eliot St., Englewood, CO 80110-4396 • 303-781-8486 FAX: 303-761-7939 • www.industrialspec.com

40PP Series Couplings

Tubing Size 1/4" - 3/8"
1/4" Flow Polypropylene



2 STANDARD COLORS

40PP Series couplings offer 1/4" flow and are produced from medical grade gamma sterilizable polypropylene. The 40PP Series polypropylene couplings offer greater chemical resistance and they are available in both valved and non-valved configurations. These couplings are now available in New Legacy Almond and Modern Cool Grey colors. All 40PP couplings interconnect with all other 40AC and 40CB couplings as well as other similar industry thumb-latch type couplings.

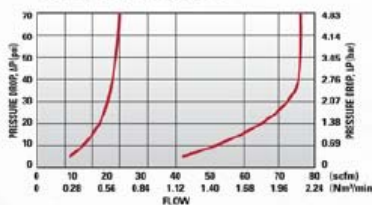
Performance Ratings:

- Operating Pressure: Vacuum to 120psi; (8.3bar)
- Temperature: 32°F to 160°F; (0°C to 71°C)
- Flow Capacity: 1/4" Size
- Sterilization: Gamma; 50 kGy irradiation max (see technical section for more detail)

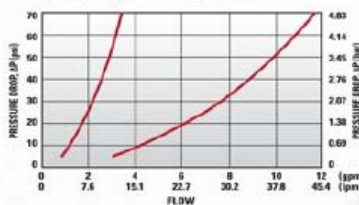
Materials & Construction:

- Bodies & Terminations: Medical Grade Polypropylene
- Internal Valves: Medical Grade Polypropylene
- Internal Valve Springs: 316 Stainless Steel
- O-rings: Peroxide-cured EPDM (others available)
- Thumb-latch: Stainless Steel
- External Springs & Pins: Stainless Steel

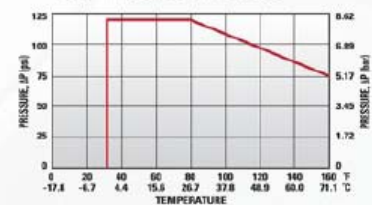
40PP Series Air Flow



40PP Series Water Flow



40PP Series Temperature



FLOW RATES

The data below shows liquid flow rates for LinkTech couplings. Each coupling combination was tested at 70°F (21°C).

C_v Values for 40PP Series Couplings

	40PPV-PE2-04	40PP-PE2-04	40PPV-PE2-06	40PP-PE2-06	40PPV-PE9-06	40PPX-PE9-06	40PPV-PE1-04	40PPX-PE1-04	40PPV-PE3-04	40PP-PE3-04	40PPV-PE3-06	40PP-PE3-06
SOCKETS												
40PPV-SE2-04	0.42	0.58	0.45	0.78	0.45	0.6	0.43	0.79	0.42	0.58	0.45	0.78
40PP-S2-04	0.52	0.95	0.7	1	0.55	0.87	0.65	0.95	0.52	0.95	0.7	1
40PPV-SE2-06	0.43	0.63	0.5	0.89	0.62	0.5	0.45	0.95	0.43	0.63	0.5	0.89
40PP-S2-06	0.53	0.95	0.8	1.4	0.57	1	0.7	1.4	0.53	0.95	0.8	1.4
40PPV-SE3-04	0.42	0.58	0.45	0.78	0.45	0.6	0.43	0.79	0.42	0.58	0.45	0.78
40PP-S3-04	0.52	0.95	0.7	1	0.55	0.87	0.65	0.95	0.52	0.95	0.7	1
40PPV-SE3-06	0.43	0.63	0.5	0.89	0.62	0.5	0.45	0.95	0.43	0.63	0.5	0.89
40PP-S3-06	0.53	0.95	0.8	1.4	0.57	1	0.7	1.4	0.53	0.95	0.8	1.4
40PPV-SE1-04	0.41	0.65	0.5	0.81	0.48	0.74	0.45	0.8	0.41	0.65	0.5	0.81
40PP-S1-04	0.56	0.84	0.83	1.4	0.58	1.04	0.75	1.4	0.56	0.84	0.83	1.4
40PPV-SE1-06	0.43	0.7	0.5	1.03	0.7	0.48	0.45	0.97	0.43	0.7	0.5	1.03
40PP-S1-06	0.57	0.84	0.82	1.4	0.6	1.05	0.75	1.4	0.57	0.84	0.82	1.4

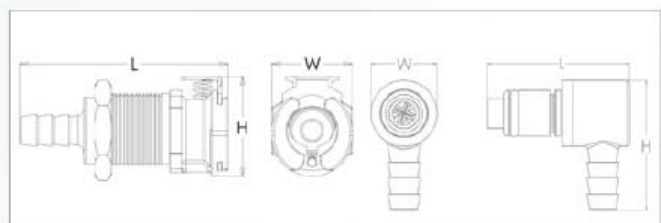
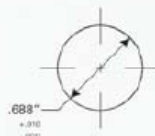
Specific coupling combination flow rates can be determined by using this formula:

$$Q = C_v \sqrt{\frac{\Delta P}{S}}$$

Q = Flow rate in gallons per minute
C_v = Average flow rates (see chart)
ΔP = Pressure drop across coupling (psi)
S = Specific gravity of liquid.

	PANEL OPENING	MAX PANEL THICKNESS	MIN PANEL THICKNESS
SOCKETS	See Drawing	0.5"	0.05"
PLUGS	0.688"	0.3"	0.05"

PANEL NUT HEX SIZE	PANEL NUT THREAD
13/16"	11/16" - 24 UNS



Reference Dimensions: L = Length, W = Width, H = Height

Worldwide Suppliers of Miniature Fluid and Pneumatic Circuitry Components